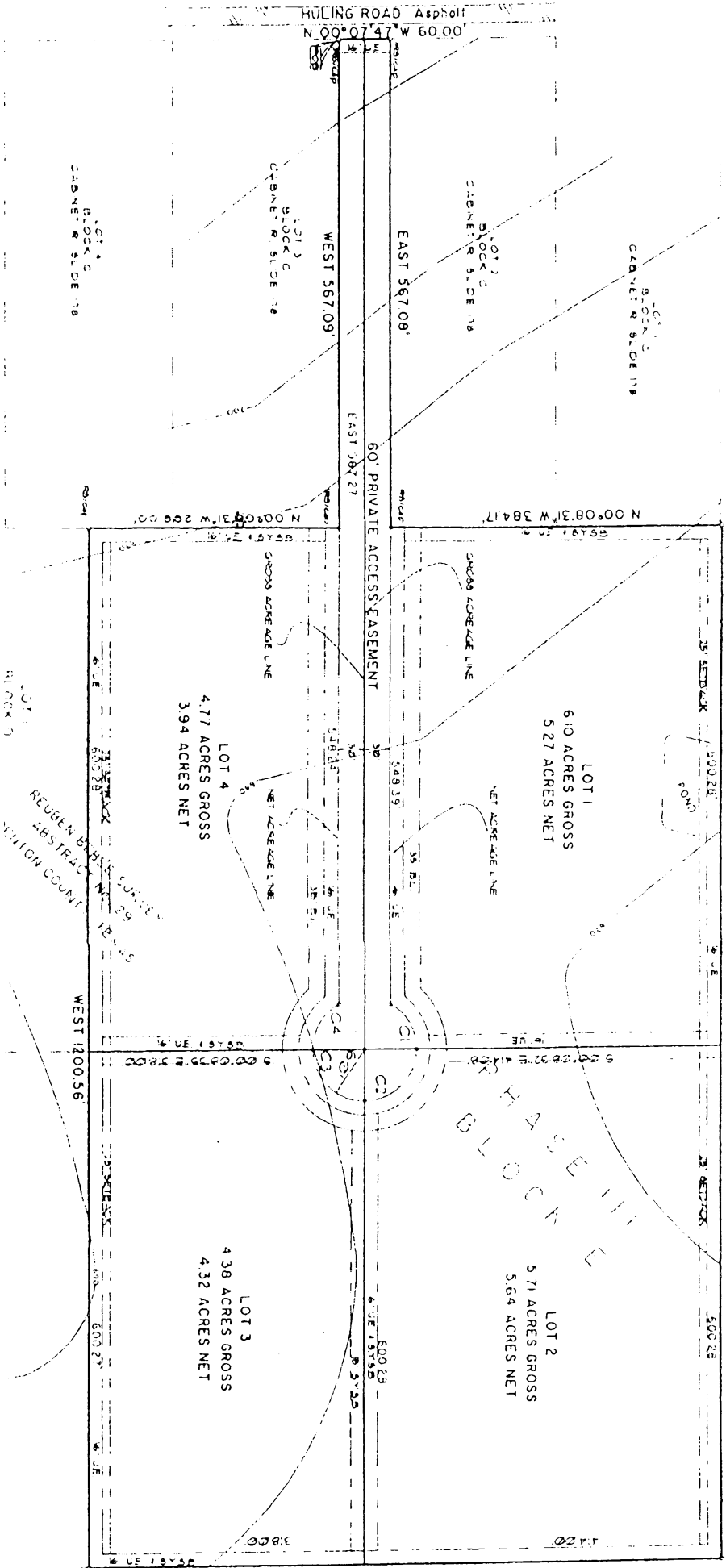


VOLUME 618 PAGE 310

HULING ROAD Asphalt
N 00°07'47" W 60.00'



S 89°59'31"E 1200.56'

BLAKE III

WEST 1200.56'

S 00°08'31"E 732.00'

REUBEN B. BASS SURVEY
ABSTRACT NO. 29
MILTON COUNTY

LOT 1
6.0 ACRES GROSS
5.27 ACRES NET

LOT 2
5.71 ACRES GROSS
5.64 ACRES NET

LOT 4
4.77 ACRES GROSS
3.94 ACRES NET

LOT 3
4.38 ACRES GROSS
4.32 ACRES NET

EAST 567.09'
WEST 567.09'

N 00°08'31"W 384.17'

60' PRIVATE ACCESS EASEMENT
EAST 387.27'

EAST 567.09'
WEST 567.09'

LOT 1
BLOCK C
CABINET R. SLIDE 118

LOT 2
BLOCK C
CABINET R. SLIDE 118

LOT 3
BLOCK C
CABINET R. SLIDE 118

LOT 4
BLOCK C
CABINET R. SLIDE 118